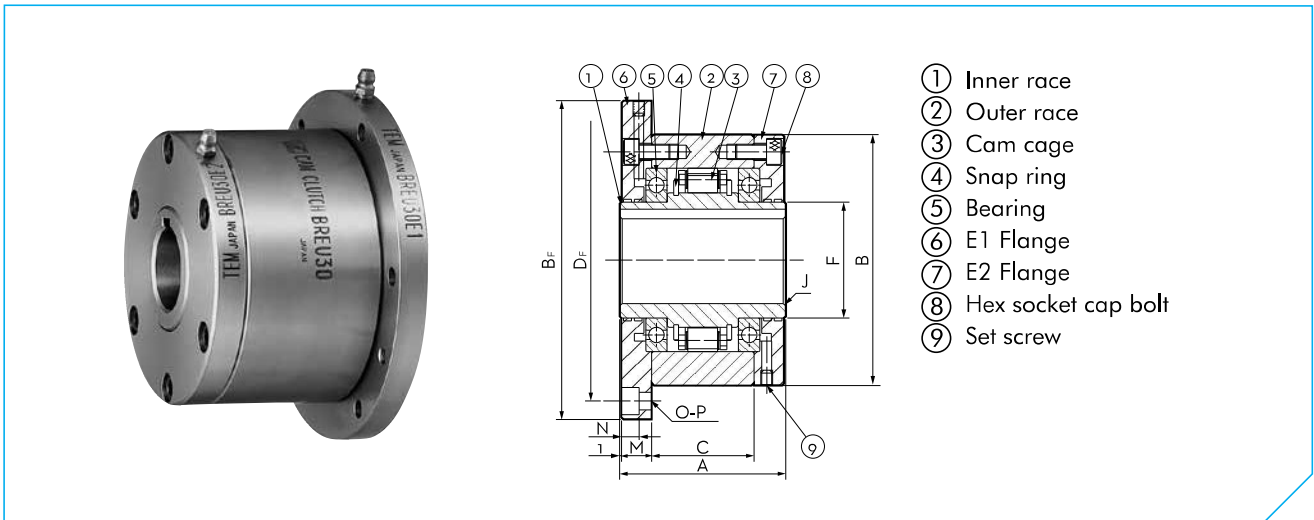


BREU-K SERIES CAM CLUTCH



E1 Flange + E2 Flange

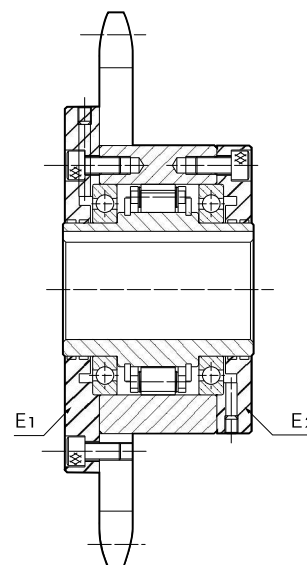
Dimensions in mm

Model	Bore Size H7	Inner Race Keyway	A	B h7	B _F	C	D _F	F	J	M	N	O-P	Approx. Mass
													kg/pc
BREU30-K E1 +E2	30	8 x 3.3	76	100	128	51	114	45	1.0	11.5	6.8	6-ø6.6	4.1
BREU35-K E1 +E2	35	10 x 3.3	79	110	140	50	124	50	1.0	13.5	6.8	6-ø6.6	5.2
BREU40-K E1 +E2	40	12 x 3.3	86	125	160	53	142	55	1.3	15.5	9.0	6-ø9.0	7.5
BREU45-K E1 +E2	45	14 x 3.8	86	130	165	53	146	60	1.3	15.5	9.0	8-ø9.0	7.9
BREU50-K E1 +E2	50	14 x 3.8	94	150	185	64	166	70	1.3	14.0	9.0	8-ø9.0	11.1
BREU55-K E1 +E2	55	16 x 4.3	104	160	204	66	182	75	1.5	18.0	11.0	8-ø11.0	14.7
BREU60-K E1 +E2	60	18 x 4.4	120	170	214	84	192	80	1.5	17.0	11.0	10-ø11.0	17.9
BREU70-K E1 +E2*	70	20 x 4.9	134	190	234	95	212	90	1.8	18.5	11.0	10-ø11.0	24.5
BREU80-K E1 +E2*	80	22 x 5.4	144	210	254	100	232	105	1.8	21.0	11.0	10-ø11.0	32.5
BREU90-K E1 +E2*	90	25 x 5.4	158	230	278	115	254	120	2.0	20.5	13.0	10-ø14.0	40.5
BREU100-K E1 +E2*	100	28 x 6.4	186	270	335	124	305	140	2.0	30.0	17.5	10-ø18.0	68.0
BREU130-K E1 +E2*	130	32 x 7.4	212	310	380	152	345	160	2.5	29.0	17.5	12-ø18.0	95.0
BREU150-K E1 +E2*	150	36 x 8.4	246	400	485	180	445	200	2.5	32.0	21.5	12-ø22.0	197.0

* = Non-stock item

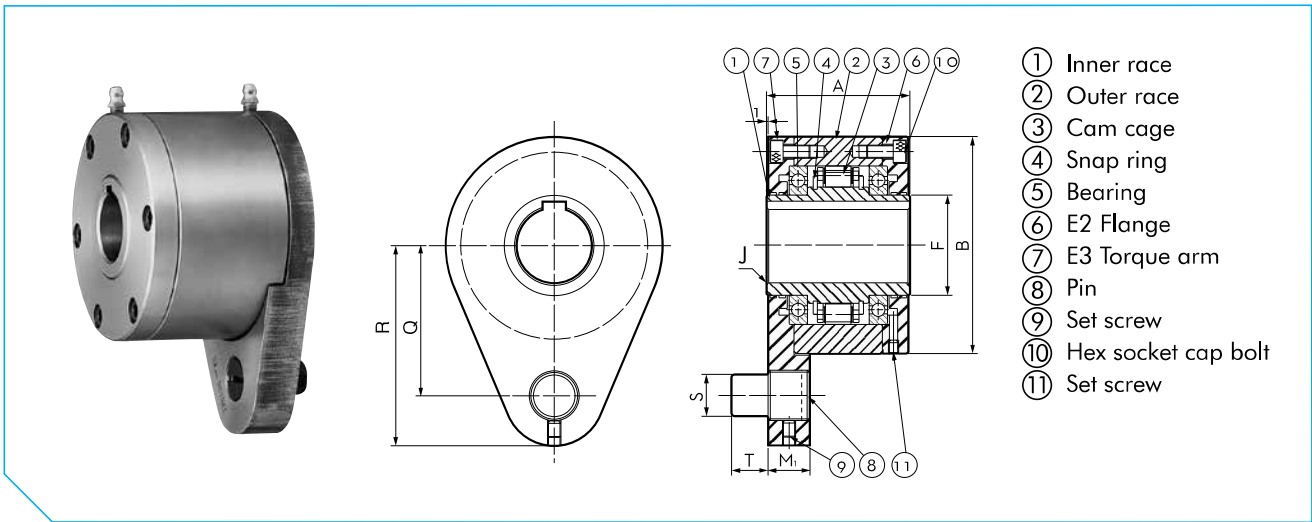
Installation and Usage

1. By installing E1 flange and E2 flange on the opposite side, the direction of rotation can be changed.
2. When mounting the clutch onto the shaft, apply pressure to the inner race but never to the outer race. Tap the inner race lightly with a soft hammer moving around the race circumference so the Cam Clutch moves slowly and uniformly onto the end of the shaft.
3. All models are pre-greased. The ambient temperature range is -40°C to +40°C.
4. Too much additional greasing of the bearings will cause malfunction of the Cam Clutch mechanism.



Installation example 2

BREU-K SERIES CAM CLUTCH



E2 Flange + E3 Torque arm

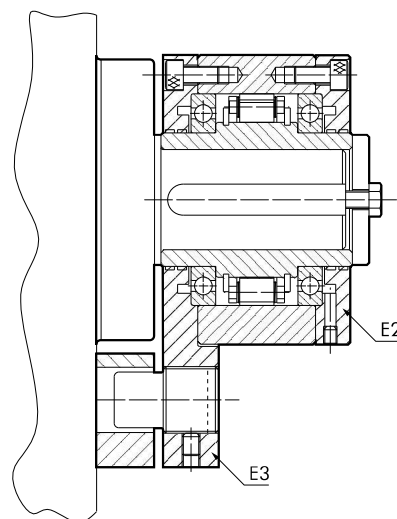
Dimensions are in mm

Model	Bore Size H7	Inner Race Keyway	A	B h7	F	J	M1	Q	R	S	T	Approx. Mass kg/pc
BREU30-K E2+E3	30	8 x 3.3	76	100	45	1.0	19	68	92	16	14	4.2
BREU35-K E2+E3	35	10 x 3.3	79	110	50	1.0	22	76	102	20	18	5.0
BREU40-K E2+E3	40	12 x 3.3	86	125	55	1.3	22	85	112	20	18	7.0
BREU45-K E2+E3	45	14 x 3.8	86	130	60	1.3	25	90	120	25	22	7.7
BREU50-K E2+E3	50	14 x 3.8	94	150	70	1.3	25	102	135	25	22	11.0
BREU55-K E2+E3	55	16 x 4.3	104	160	75	1.5	30	108	142	32	25	14.0
BREU60-K E2+E3	60	18 x 4.4	120	170	80	1.5	30	112	145	32	25	17.2
BREU70-K E2+E3*	70	20 x 4.9	134	190	90	1.8	35	135	175	38	30	24.5
BREU80-K E2+E3*	80	22 x 5.4	144	210	105	1.8	35	145	185	38	30	31.9
BREU90-K E2+E3*	90	25 x 5.4	158	230	120	2.0	45	155	205	50	40	41.1
BREU100-K E2+E3*	100	28 x 6.4	186	270	140	2.0	45	180	230	50	40	65.0
BREU130-K E2+E3*	130	32 x 7.4	212	310	160	2.5	60	205	268	68	55	94.0
BREU150-K E2+E3*	150	36 x 8.4	246	400	200	2.5	60	255	325	68	55	190.0

* = Non-stock item

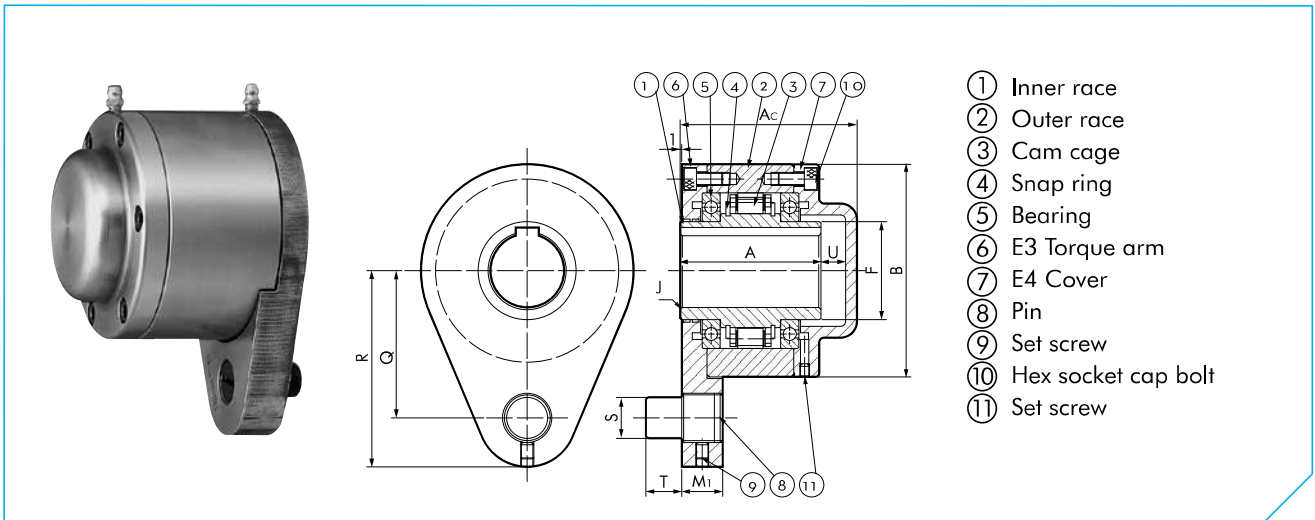
Installation and Usage

1. By installing the E2 flange and E3 torque arm on the opposite side, the direction of rotation can be changed.
2. When mounting the clutch onto the shaft, apply pressure to the inner race but never to the outer race. Tap the inner race lightly with a soft hammer moving around the race circumference so the Cam Clutch moves slowly and uniformly onto the end of the shaft.
3. All models are pre-greased. The ambient temperature range is -40°C to +40°C.
4. Too much additional greasing of the bearings will cause malfunction of the Cam Clutch mechanism.



Installation example 3

BREU-K SERIES CAM CLUTCH



E3 Torque arm + E4 Cover

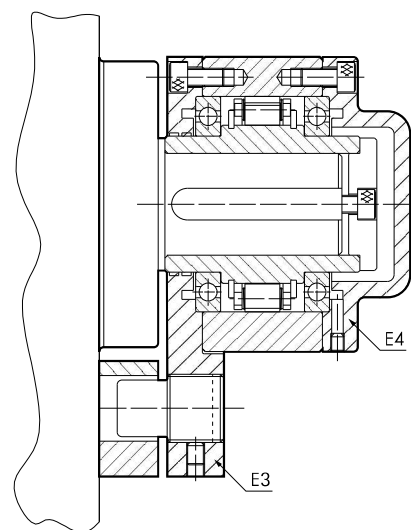
Dimensions in mm

Model	Bore Size H7	Inner Race Keyway	A	Ac	B h7	F	J	M1	Q	R	S	T	U	Approx. Mass
														kg/pc
BREU30-K E3+E4	30	8 x 3.3	76	92	100	45	1.0	19	68	92	16	14	10	4.5
BREU35-K E3+E4	35	10 x 3.3	79	97	110	50	1.0	22	76	102	20	18	12	5.3
BREU40-K E3+E4	40	12 x 3.3	86	105	125	55	1.3	22	85	112	20	18	12	7.4
BREU45-K E3+E4	45	14 x 3.8	86	108	130	60	1.3	25	90	120	25	22	15	8.1
BREU50-K E3+E4	50	14 x 3.8	94	113	150	70	1.3	25	102	135	25	22	12	11.5
BREU55-K E3+E4	55	16 x 4.3	104	126	160	75	1.5	30	108	142	32	25	15	15.6
BREU60-K E3+E4	60	18 x 4.4	120	143	170	80	1.5	30	112	145	32	25	15	18.0
BREU70-K E3+E4*	70	20 x 4.9	134	164.5	190	90	1.8	35	135	175	38	30	22.5	25.5
BREU80-K E3+E4*	80	22 x 5.4	144	168	210	105	1.8	35	145	185	38	30	16	32.9
BREU90-K E3+E4*	90	25 x 5.4	158	192	230	120	2.0	45	155	205	50	40	27	43.4
BREU100-K E3+E4*	100	28 x 6.4	186	221	270	140	2.0	45	180	230	50	40	28	67.0
BREU130-K E3+E4*	130	32 x 7.4	212	250	310	160	2.5	60	205	268	68	55	30	97.0
BREU150-K E3+E4*	150	36 x 8.4	246	286	400	200	2.5	60	255	325	68	55	32	193.0

* = Non-stock item

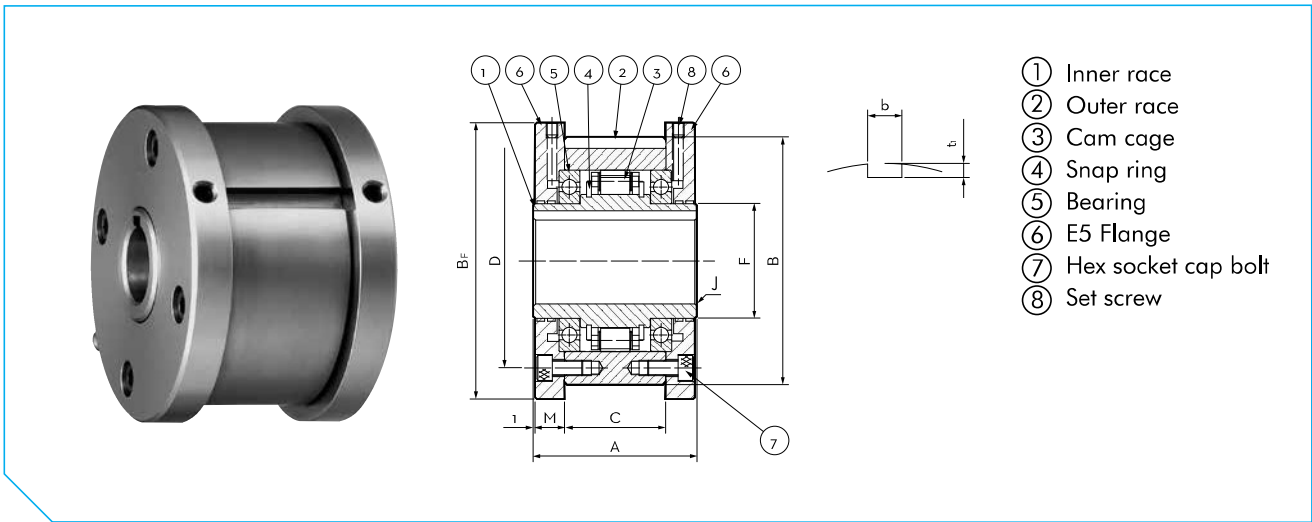
Installation and Usage

1. By installing the E3 torque arm and the E4 cover in the opposite way, the direction of rotation can be changed.
2. When mounting the clutch onto the shaft, apply pressure to the inner race but never to the outer race. Tap the inner race lightly with a soft hammer moving around the race circumference so the Cam Clutch moves slowly and uniformly onto the end of the shaft.
3. All models are pre-greased.
4. Fix grease nipples to optional parts.
5. The ambient temperature range is -40°C to +40°C.
6. Too much additional greasing of the bearings will cause malfunction of the Cam Clutch mechanism.



Installation example 4

BREU-K SERIES CAM CLUTCH



E5 Flange + E5 Flange

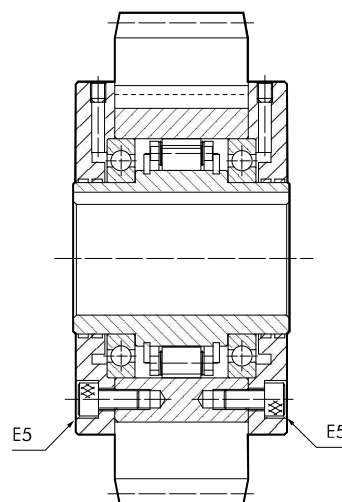
Dimensions in mm

Model	Bore Size H7	Inner Race Keyway	A	B h7	B _f	C	D	F	J	M	Outer Race Keyway		Approx. Mass kg/pc
											b P10	t _i	
BREU30-K E5+E5	30	8 x 3.3	76	100	109	51	87	45	1.0	11.5	8 x 4.0	3.9	
BREU35-K E5+E5	35	10 x 3.3	79	110	119	50	96	50	1.0	13.5	10 x 5.0	4.9	
BREU40-K E5+E5	40	12 x 3.3	86	125	135	53	108	55	1.3	15.5	12 x 5.0	7.0	
BREU45-K E5+E5	45	14 x 3.8	86	130	140	53	112	60	1.3	15.5	14 x 5.5	7.4	
BREU50-K E5+E5	50	14 x 3.8	94	150	160	64	132	70	1.3	14.0	14 x 5.5	10.7	
BREU55-K E5+E5	55	16 x 4.3	104	160	170	66	138	75	1.5	18.0	16 x 6.0	13.6	
BREU60-K E5+E5	60	18 x 4.4	120	170	182	84	150	80	1.5	17.0	18 x 7.0	17.3	
BREU70-K E5+E5*	70	20 x 4.9	134	190	202	95	165	90	1.8	18.5	20 x 7.5	23.5	
BREU80-K E5+E5*	80	22 x 5.4	144	210	222	100	185	105	1.8	21.0	22 x 9.0	31.3	
BREU90-K E5+E5*	90	25 x 5.4	158	230	242	115	206	120	2.0	20.5	25 x 9.0	38.4	
BREU100-K E5+E5*	100	28 x 6.4	186	270	282	124	240	140	2.0	30.0	28 x 10.0	63.0	
BREU130-K E5+E5*	130	32 x 7.4	212	310	322	152	278	160	2.5	29.0	32 x 11.0	88.0	
BREU150-K E5+E5*	150	36 x 8.4	246	400	412	180	360	200	2.5	32.0	36 x 12.0	184.0	

*= Non-stock item

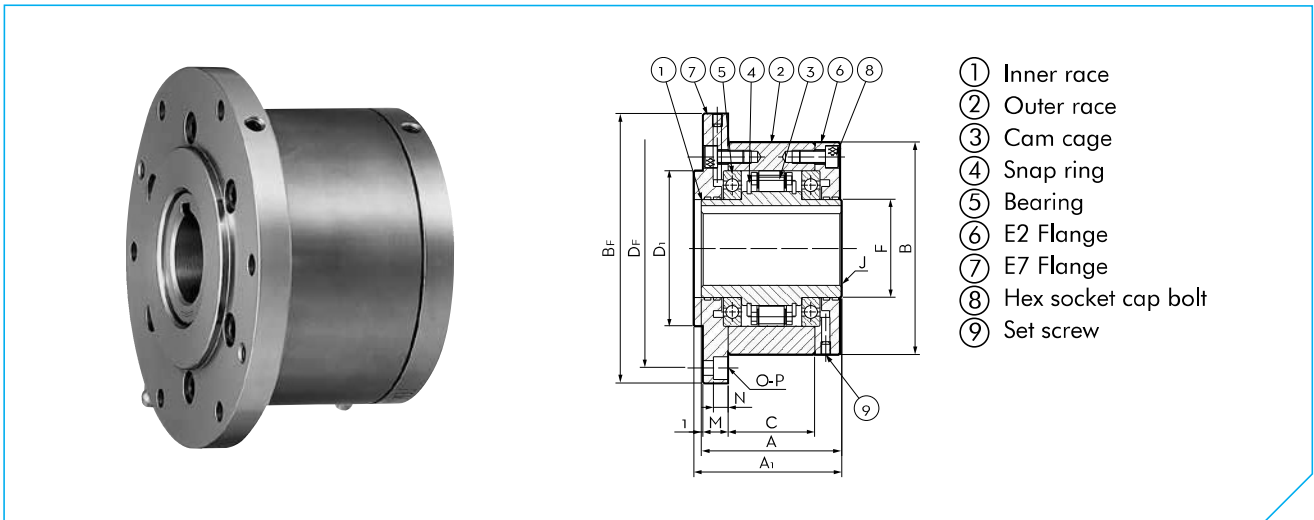
Installation and Usage

1. By turning the Cam Clutch on the opposite side, the direction of rotation can be changed.
2. Fix the grease nipple to the option parts.
3. When mounting the clutch onto the shaft, apply pressure to the inner race but never to the outer race. Tap the inner race lightly with a soft hammer moving around the race circumference so the Cam Clutch moves slowly and uniformly onto the end of the shaft.
4. All models are pre-greased. The ambient temperature range is -40°C to +40°C.
5. Too much additional greasing of the bearings will cause malfunction of the Cam Clutch mechanism.
6. Ensure that the closed side of the spring clip is situated in the same direction as the rotation of the outer race.



Installation example 5

BREU-K SERIES CAM CLUTCH



E2 Flange + E7 Flange

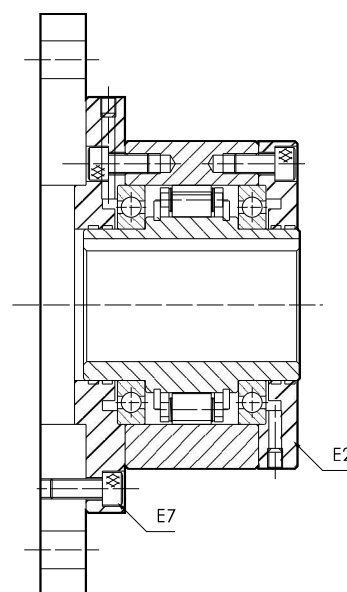
Dimensions in mm

Model	Bore Size H7	Inner Race Keyway	A	A1	B h7	Bf	C	D1 h7	Df	F	J	M	N	O-P	Approx. Mass kg/pc
BREU30-K E2+E7	30	8 x 3.3	76	78	100	128	51	75	114	45	1.0	11.5	6.8	6-ø6.6	4.2
BREU35-K E2+E7	35	10 x 3.3	79	81	110	140	50	80	124	50	1.0	13.0	6.8	6-ø6.6	5.3
BREU40-K E2+E7	40	12 x 3.3	86	88	125	160	53	90	142	55	1.3	15.0	9.0	6-ø9.0	7.6
BREU45-K E2+E7	45	14 x 3.8	86	88	130	165	53	95	146	60	1.3	15.0	9.0	8-ø9.0	8.0
BREU50-K E2+E7	50	14 x 3.8	94	96	150	185	64	110	166	70	1.3	13.0	9.0	8-ø9.0	11.3
BREU55-K E2+E7	55	16 x 4.3	104	106	160	204	66	115	182	75	1.5	17.0	11.0	8-ø11.0	14.8
BREU60-K E2+E7	60	18 x 4.4	120	122	170	214	84	125	192	80	1.5	16.0	11.0	10-ø11.0	18.2
BREU70-K E2+E7*	70	20 x 4.9	134	136	190	234	95	140	212	90	1.8	17.5	11.0	10-ø11.0	24.8
BREU80-K E2+E7*	80	22 x 5.4	144	146	210	254	100	160	232	105	1.8	20.0	11.0	10-ø11.0	32.9
BREU90-K E2+E7*	90	25 x 5.4	158	160	230	278	115	180	254	120	2.0	19.0	13.0	10-ø14.0	40.8
BREU100-K E2+E7*	100	28 x 6.4	186	188	270	335	124	210	305	140	2.0	28.0	17.5	10-ø18.0	69.0
BREU130-K E2+E7*	130	32 x 7.4	212	214	310	380	152	240	345	160	2.5	27.0	17.5	12-ø18.0	96.0
BREU150-K E2+E7*	150	36 x 8.4	246	248	400	485	180	310	445	200	2.5	30.0	21.5	12-ø22.0	198.0

* = Non-stock item

Installation and Usage

1. By installing the E2 flange and E7 flange on the opposite side, the direction of rotation can be changed.
2. Fix the grease nipple to the option parts.
3. When mounting the clutch onto the shaft, apply pressure to the inner race but never to the outer race. Tap the inner race lightly with a soft hammer moving around the race circumference so the Cam Clutch moves slowly and uniformly.
4. All models are pre-greased. The ambient temperature range is -40°C to +40°C.
5. Too much additional greasing of the bearings will cause malfunction of the Cam Clutch mechanism.



Installation example 6